

# Identification de 3 signatures chimiques des otolithes de sardines (*Sardina pilchardus*) le long de la côte marocaine atlantique

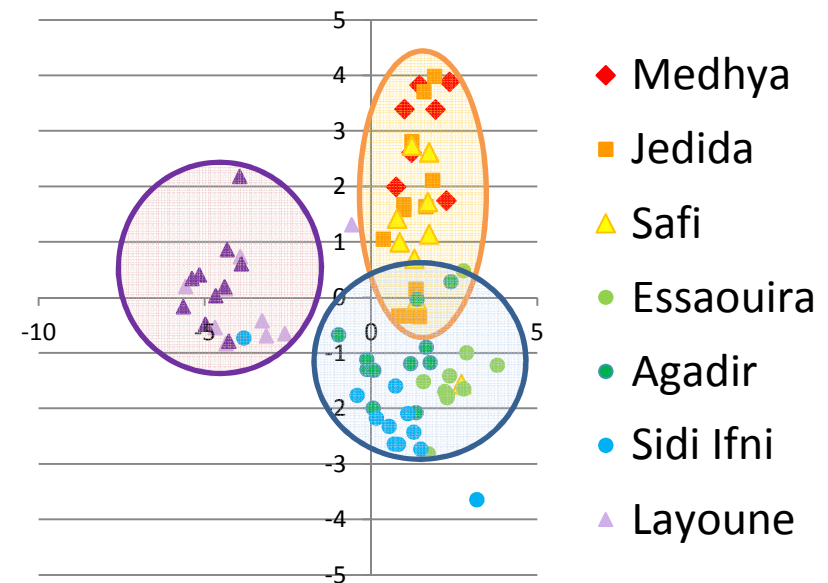
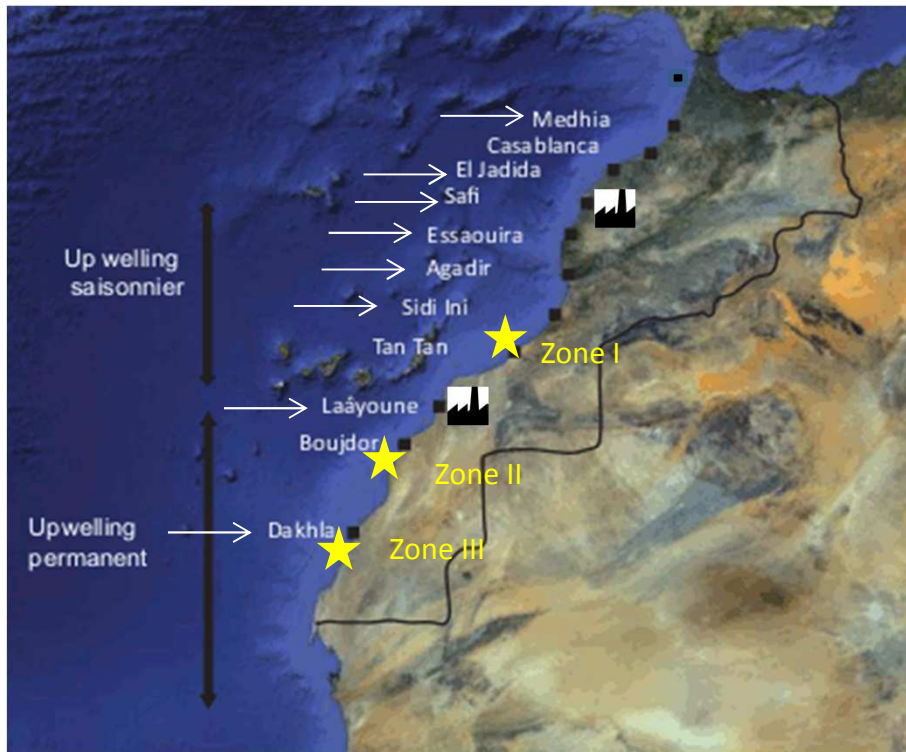
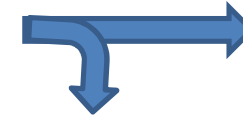
Labonne, M., Masski, H., Tai, I., Lae, R., Talba, S., Bassoullet, C., Tito de Morais, L.

But: Caractériser les apports en contaminants ETM le long de la côte marocaine

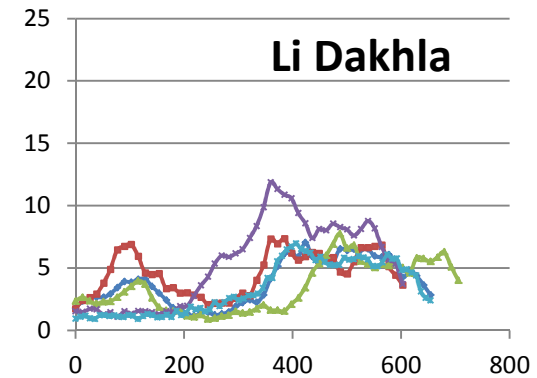
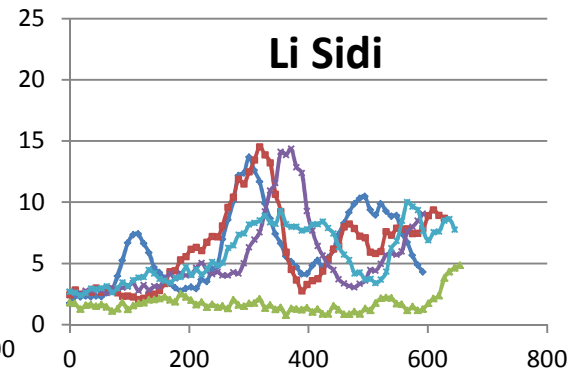
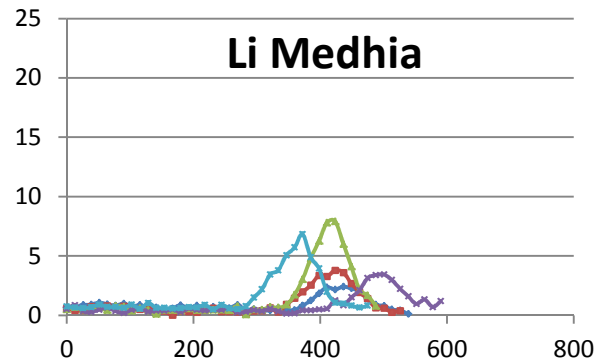
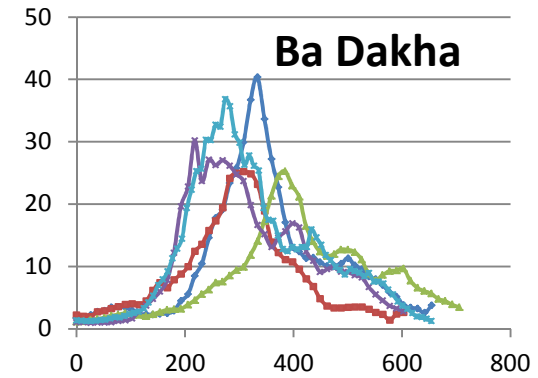
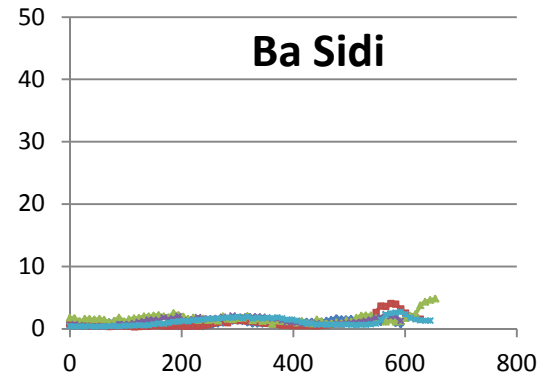
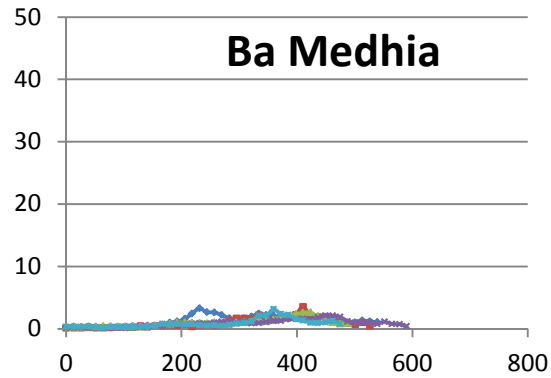
8 localisations à terre  
+ 3 Zones en mer



Analyses ICP-MS en total  
et transects



## Profils individuels



- Conclusions: -Environnements variables et caractérisables le long de la côte
- Signatures chimiques en adéquation avec autres résultats sur les populations
  - Migrations